

# Sidmouth Integrated Model for Specialist Palliative Nursing<sup>TM</sup>



**Sidmouth**  
**Hospice at Home**

REGISTERED CHARITY NO: 1153338





**Sidmouth**  
**Hospice at Home**

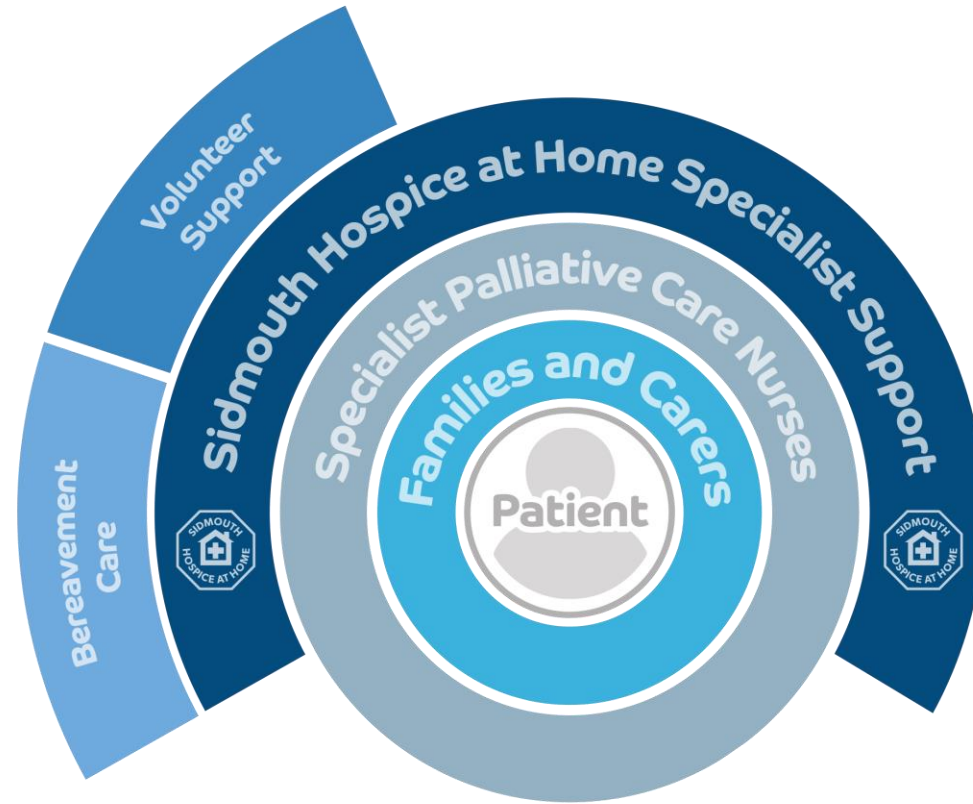
REGISTERED CHARITY NO: 1153338

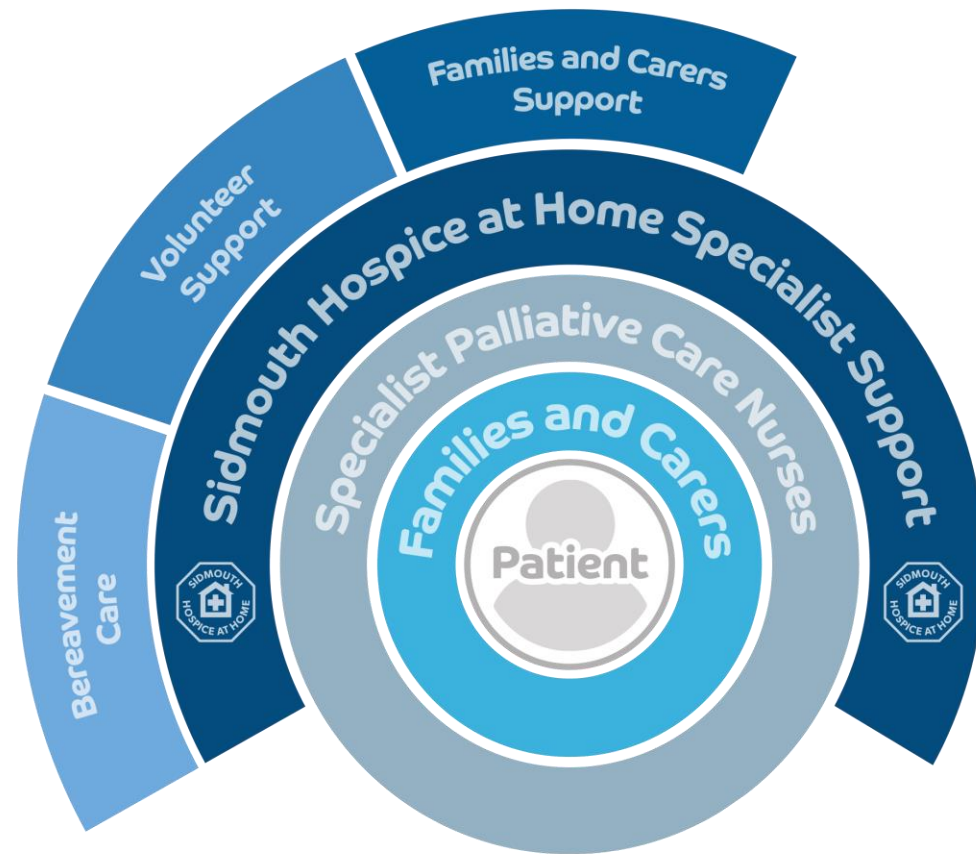




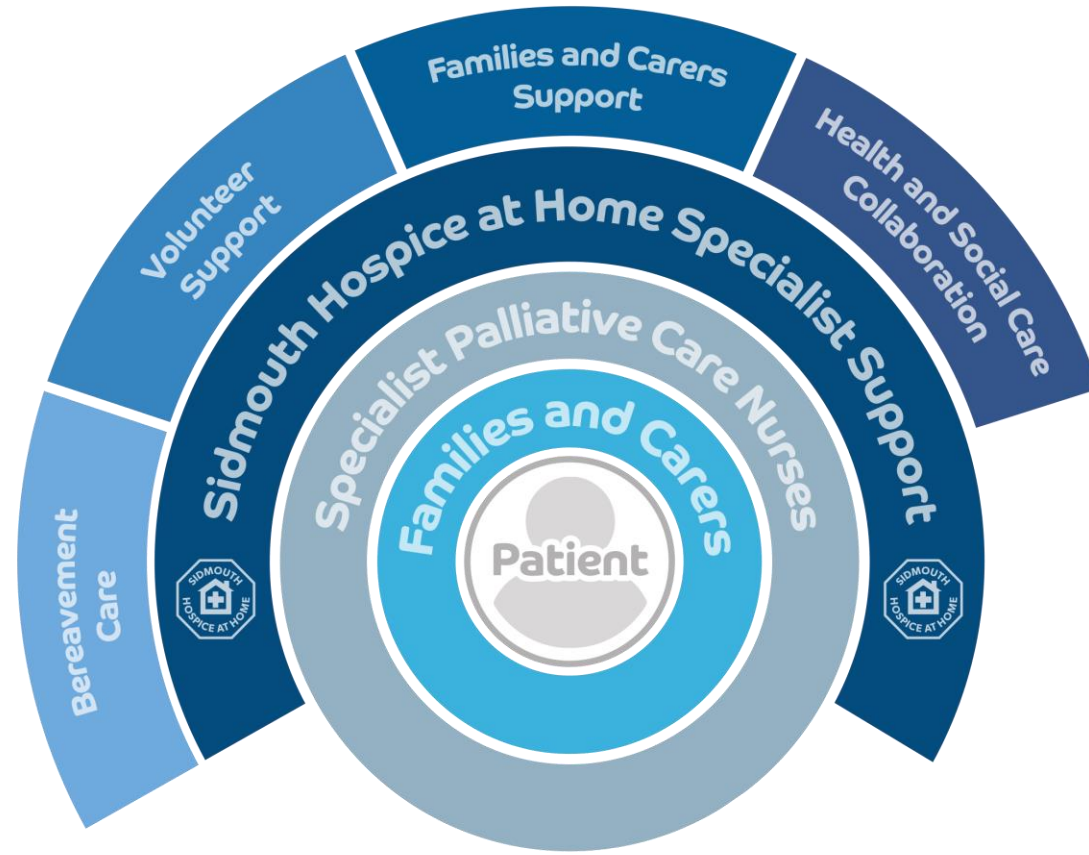
**Sidmouth**  
**Hospice at Home**  
REGISTERED CHARITY NO: 1153338

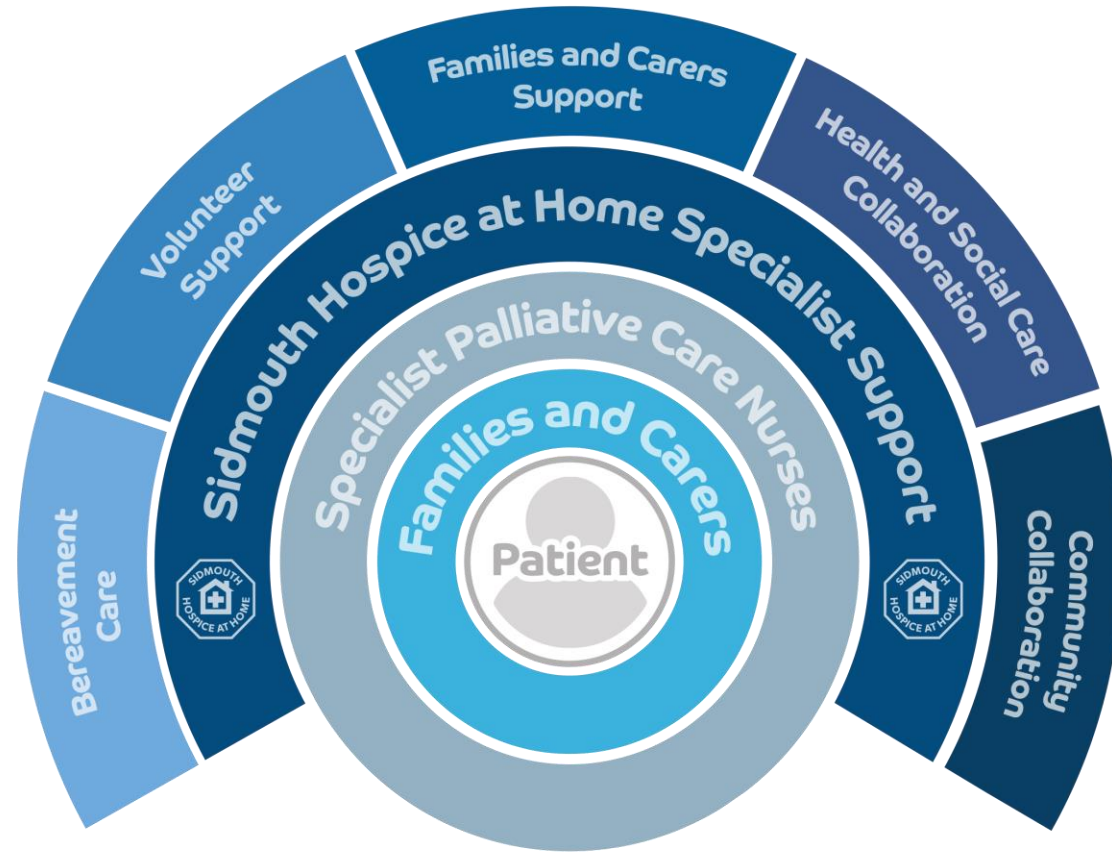




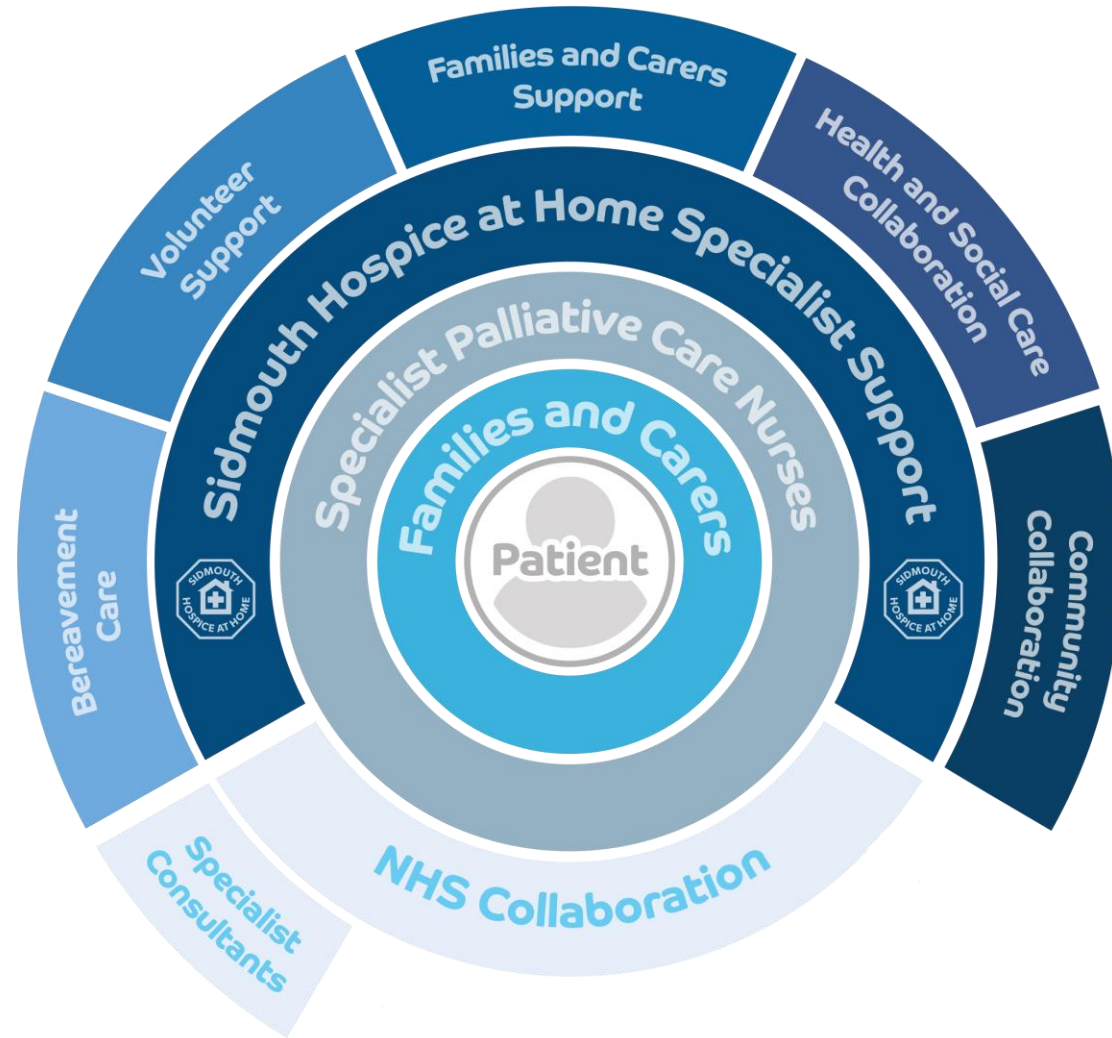


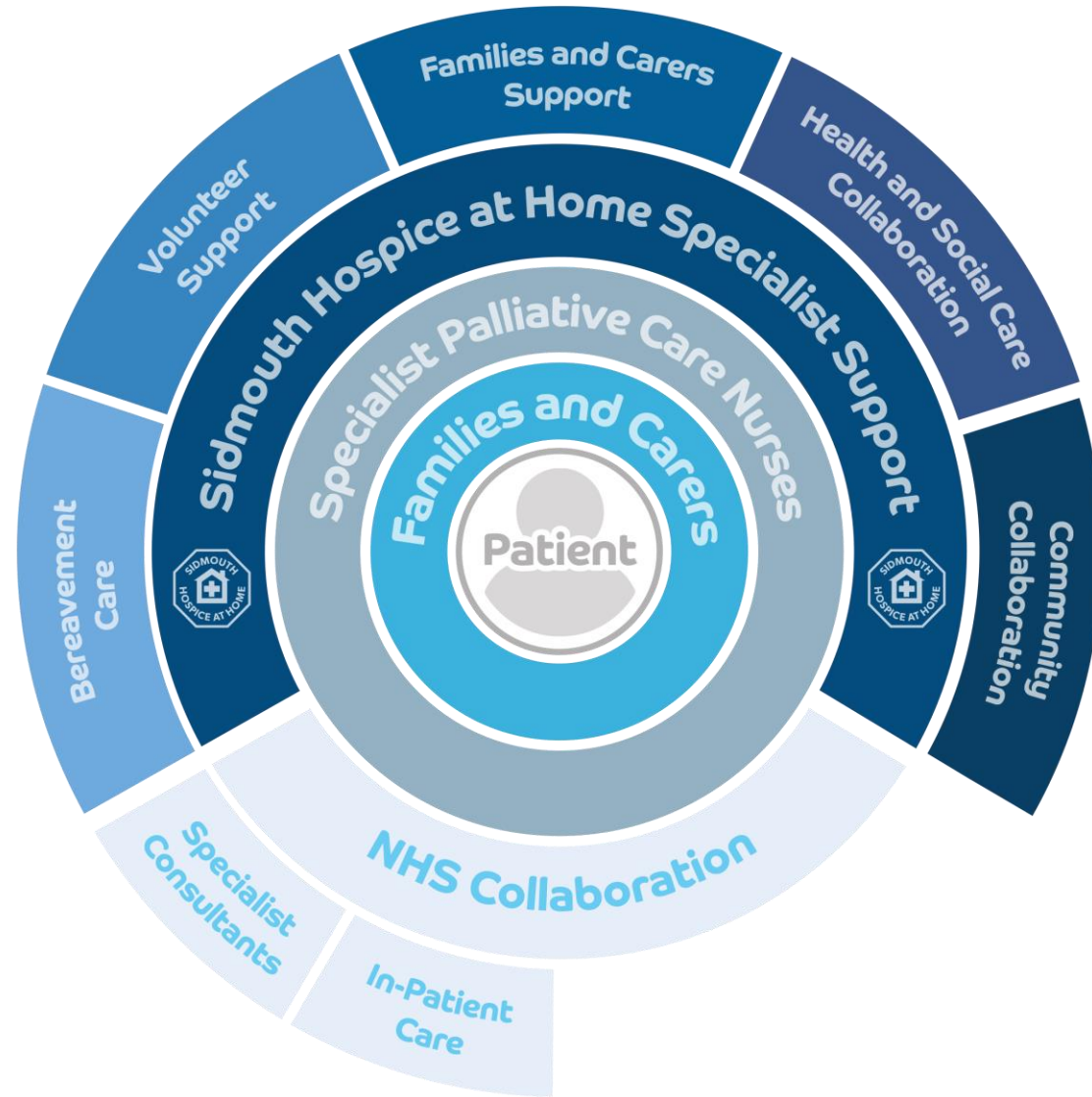


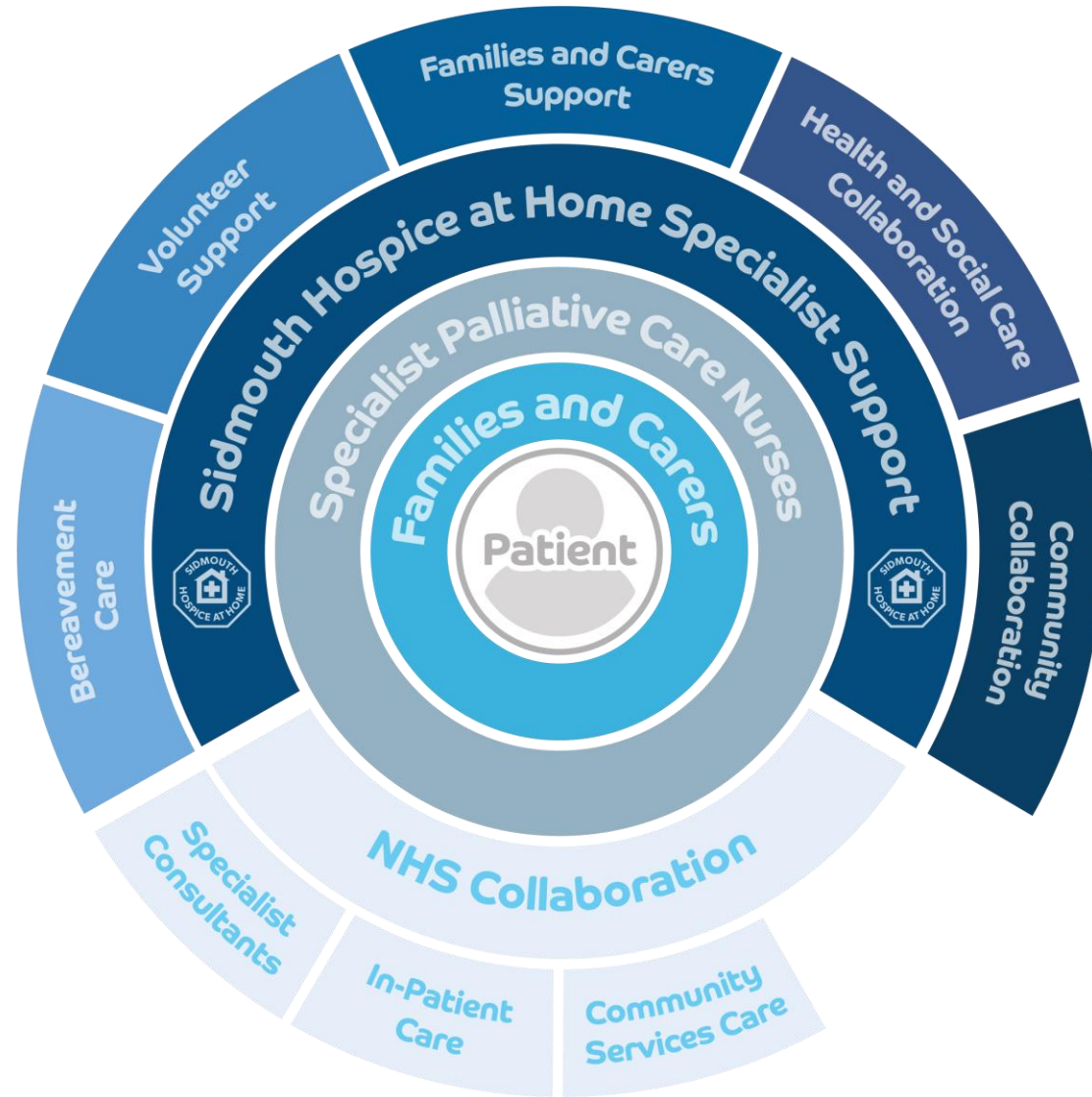


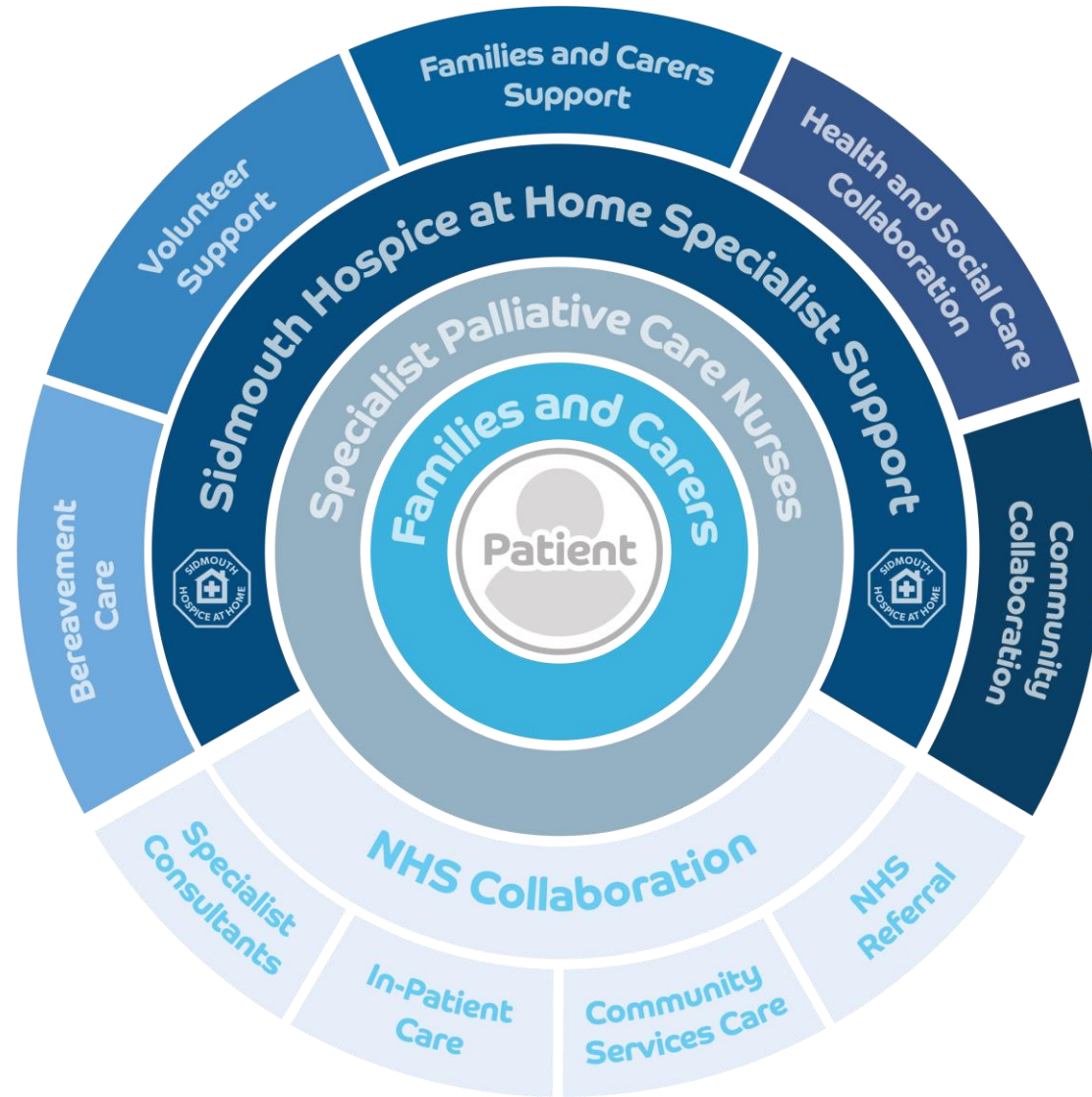


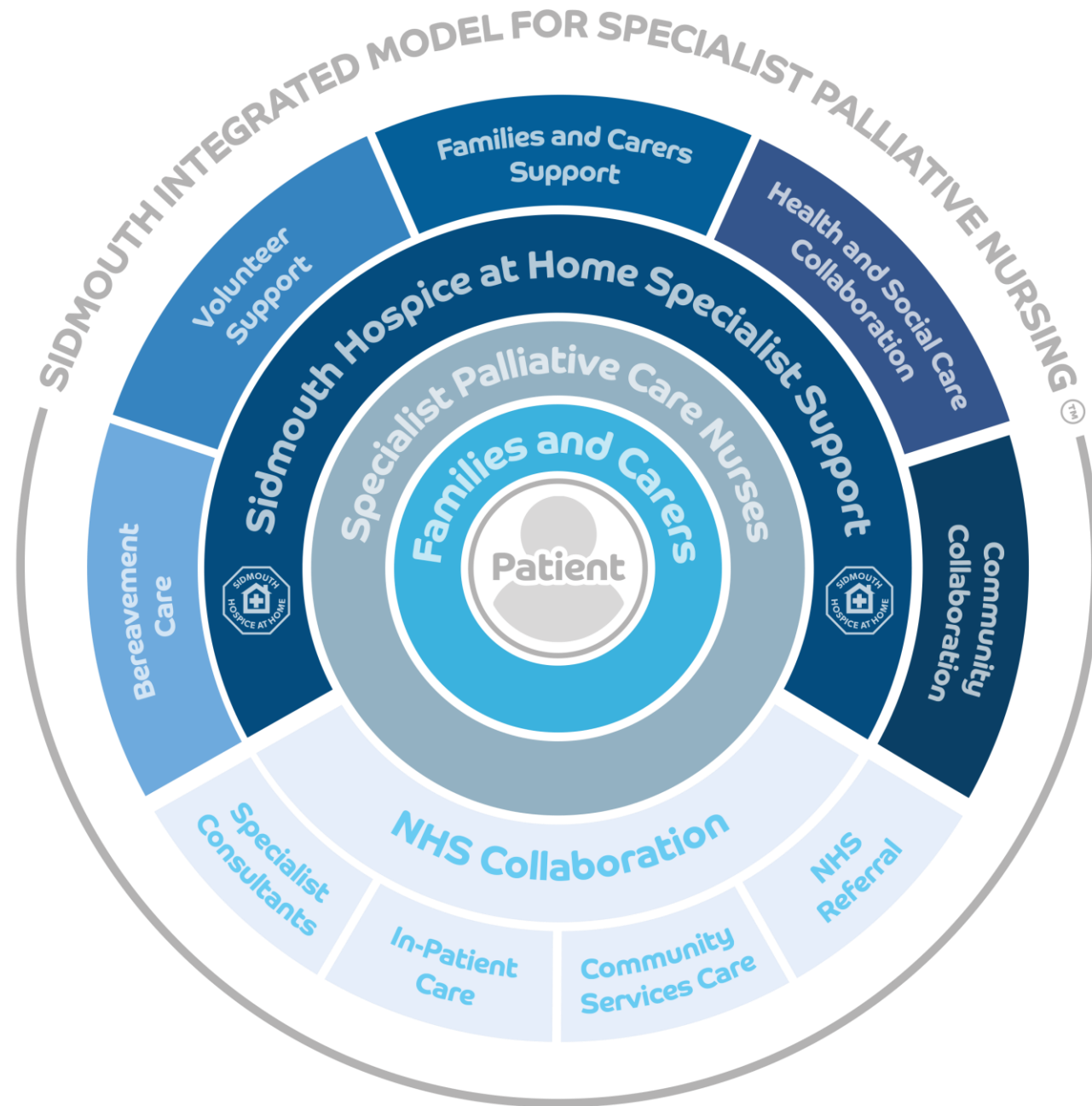




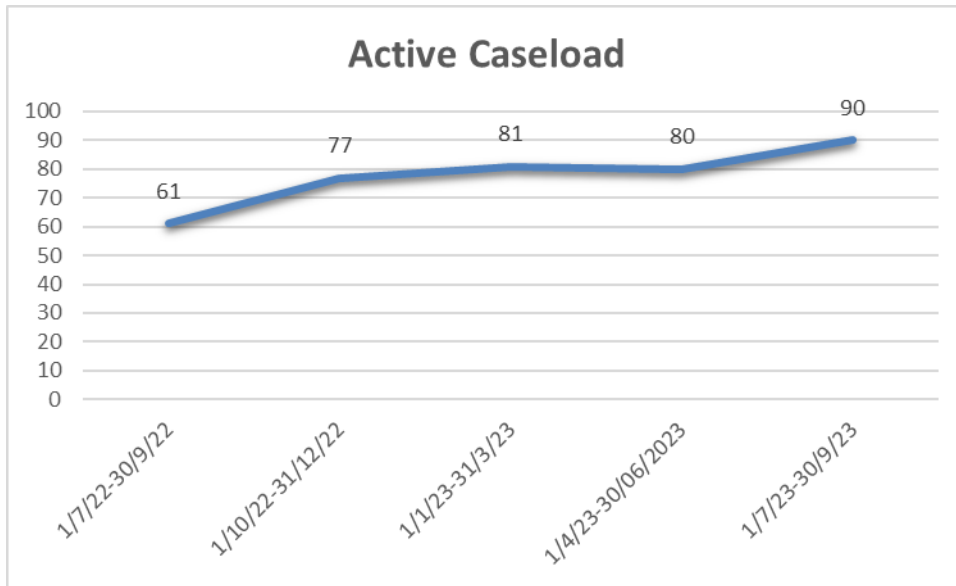




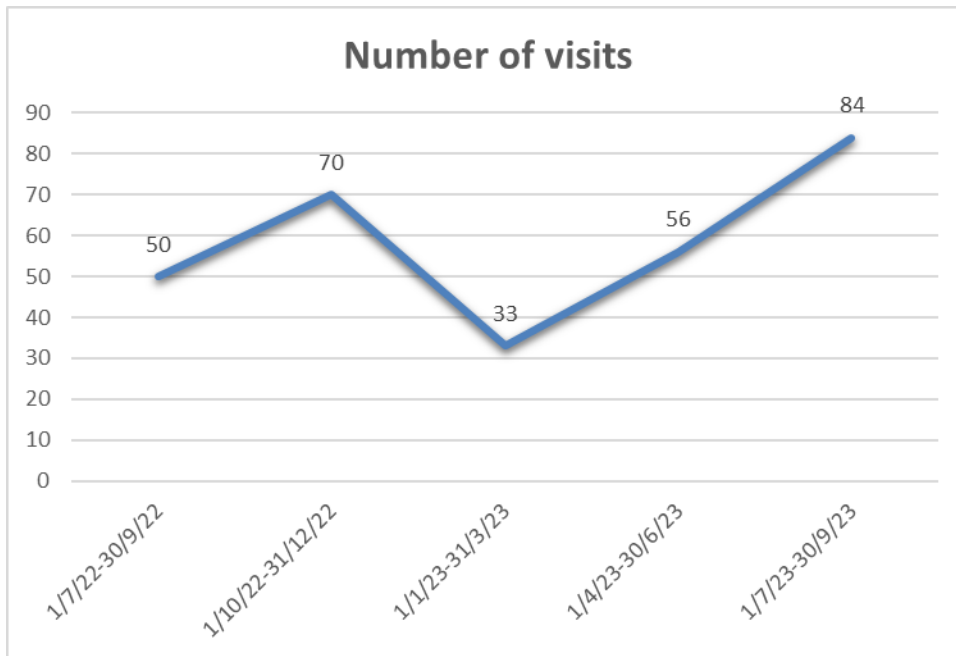




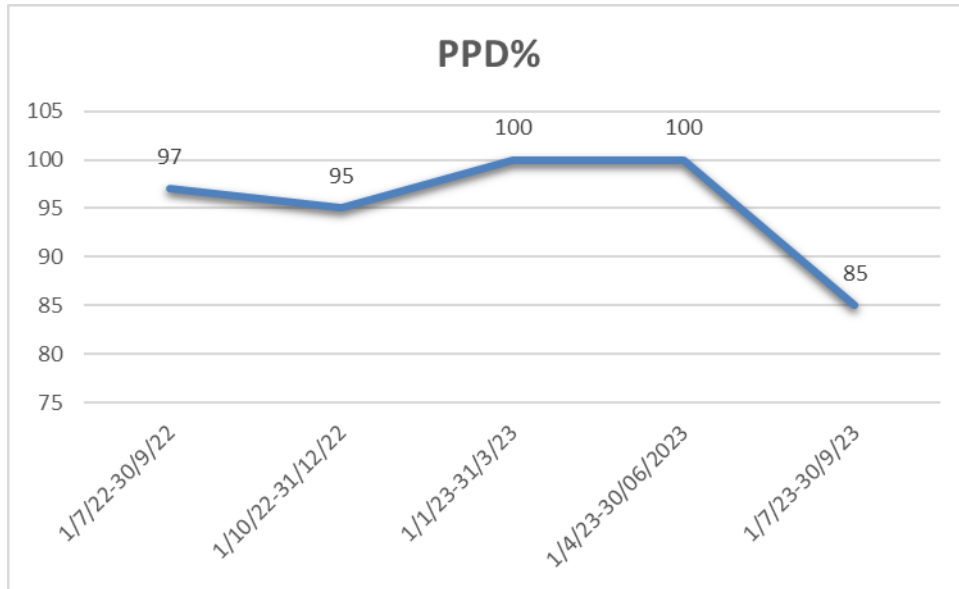




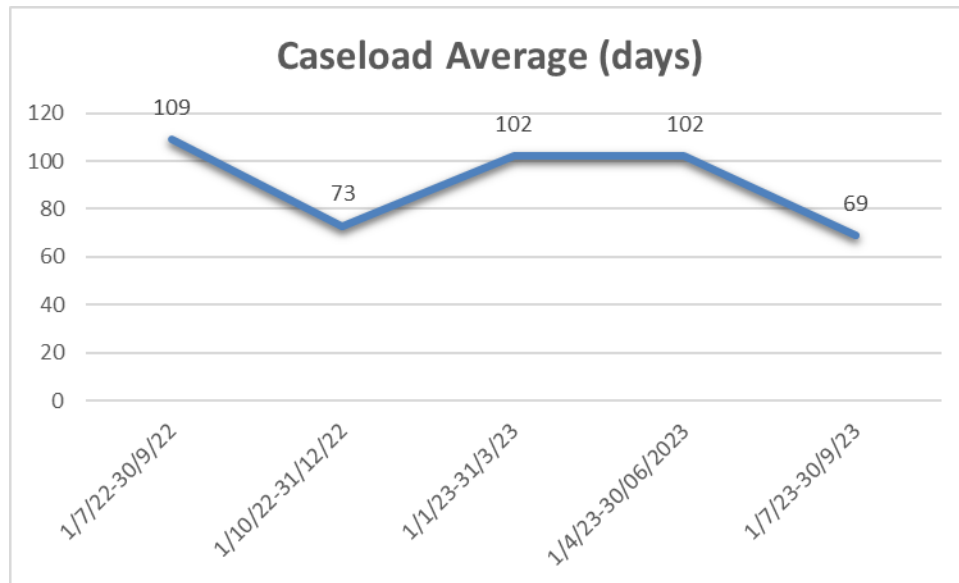
- Nearly 50% increase in caseload size in one year
- Increase in pressure on the nursing team
- Ageing population, all living longer
- Increasingly complex cases and co-morbidities



- 68% increase in the number of visits being made
- Increase in the length of visit as well as the number of visits being made



- The national average of PPD is circa 27%
- For greater context, we achieved 91% in first 2 years of service
- In the first two years, 180 patients died in their preferred place of death



- Patients and families spend far longer time benefitting from our Hospice at Home care than other H@H models

- **The cost of providing this service is over £700,000 annually.**
- We are funded entirely by the generosity of our community and receive no NHS or government funding.
- We conservatively estimate that we save the NHS over £755,000 per year through reducing admissions and speeding up discharge.

**Any questions please**