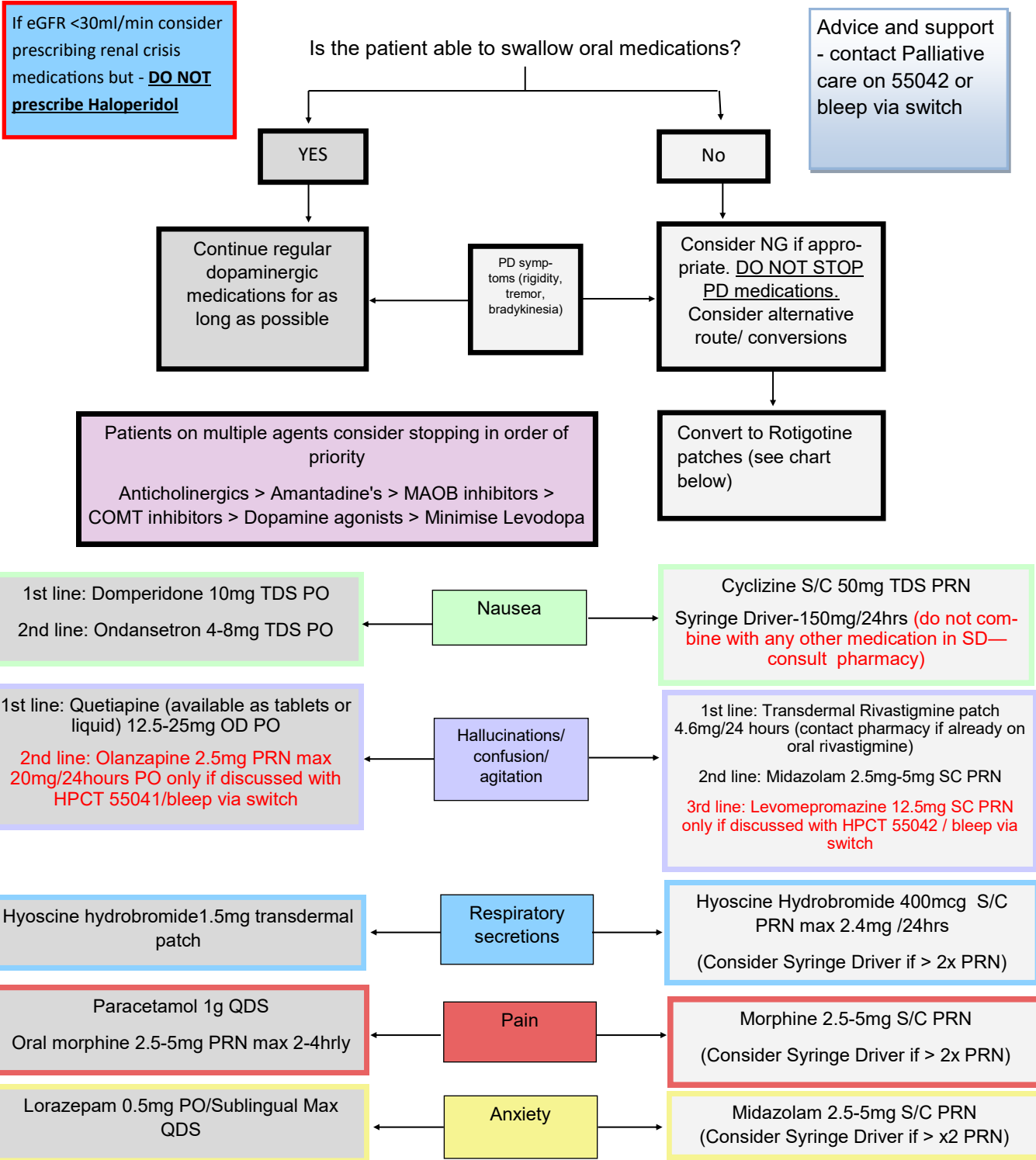


# End of life care in Parkinson's disease

**\*\* INVOLVE THE PARKINSON'S SPECIALIST TEAM\*\***



## Conversion to Rotigotine patch

Levodopa Preparation	Rotigotine	Pramipex-ole MR	Rotigotine	Ropinirole	Requip XL	Rotigotine	L-dopa Preparation	Rotigotine
Madopar/Sinemet 62.5mg BD	2mg/24hr	0.26mg	2mg/24hr	Starter pack	N/A	2mg/24hr	Stalevo 50 TDS	6mg/24hr
Madopar/Sinemet 62.5mg TDS	4mg/24hr	0.52mg	4mg/24hr	1mg TDS	4mg/day	4mg/24hr	Stalevo 100 TDS	10mg/24hr
Madopar/Sinemet 62.5mg QDS	6mg/24hr	1.05mg	6mg/24hr	2mg TDS	6mg/day	6mg/24hr	Stalevo 100 QDS	14mg/24hr
Madopar/Sinemet 125mg TDS	8mg/24hr	1.57mg	8mg/24hr	3mg TDS	8mg/day	8mg/24hr	Stalevo 150 TDS	16mg/24hr
Madopar/Sinemet 125mg QDS	10mg/24hr	2.1 mg	10mg/24hr	4mg TDS	12mg/day	10mg/24hr	Stalevo 200 TDS	16mg/24hr
Madopar/Sinemet 187.5mg TDS	12mg/24hr	2.62 mg	14mg/24hr	6mg TDS	16mg/day	12mg/24hr	Any problems contact Louise/ Angela on 07810 284655	
Madopar/Sinemet 187.5mg QDS	16mg/24hr	3.15mg	16mg/24hr	8mg TDS	24mg/day	16mg/24hr		

**\*Maximum 6mg for patients with Delirium then seek advice from Parkinson's Team On 07810284655 /01803 655513 Monday- Friday 9am-5pm ( Do not cut Patches)**